

# HALLAM BOROUGH GOVERNMENT NEWS

PUBLISHED AS A SERVICE TO THE CITIZENS OF HALLAM BOROUGH

2020 Summer

WWW.HALLAMBOROUGH.COM

## ANNUAL STREET SWEEPING

In past years, street sweeping had been done on all of the streets in the Borough. Due to the lack of snowfall over this past winter season, Hallam Borough Council, after considerable thought, has decided to cancel street sweeping services this year. However, the Hallam Borough Public Works department will be cleaning areas in the Borough where a significant amount of debris has gathered. Storm drains are cleared when necessary and after hard rains.

## 2020 PRIMARY ELECTION

In a recent letter from The Pennsylvania Department of State, legislation was passed to reschedule the **Primary Election to Tuesday, June 2, 2020!** This recent change is related to the COVID-19 pandemic. Hallam Borough residents that are registered voters must go to the Friendship Fire Company, located at 163 East Market Street in Hallam to vote.

Additionally, all Pennsylvania voters now also have the ability to vote by mail without having to provide an excuse-for any reason! You may apply for mail-in ballots online, by mail or by requesting an application form by calling the Hallam Borough office (717-755-0810) until one week before the election. Mail-in ballot applications must be received by the York County Elections office by 5 p.m. Tuesday, May 26, 2020. Once you receive your mail-in ballot, you have until 8 p.m. on June 2 to deliver your completed ballot to the York County Election Office but you should drop it off or mail it as early as you can to ensure timely delivery.

## TRASH AND RECYCLING

Trash, Recycling and One Large Item are collected every **MONDAY** unless an observed holiday falls on a Monday. Collections will then be delayed until Tuesday. Observed holidays include New Year's Day, Memorial Day, July 4th, Labor Day, Thanksgiving Day and Christmas Day. For the 2020 collections, the days affected will be: Labor Day, Monday September 7th. Trash, recycling and one large item will be collected on Tuesday these weeks.

**DO NOT PUT YOUR TRASH OUT PRIOR TO SUNDAY AFTERNOON! ALL CONTAINERS MUST BE REMOVED FROM PICK-UP SITE BY MIDNIGHT ON THE DAY OF COLLECTION!**

- You are allowed to set out a maximum of five (5) 32-gallon bags/cans each week. The large two-wheeled toter counts as three (3). Be sure the containers do not exceed 60 lbs.
- Tree limbs are to be 48 inches or less and bundled.
- You may set out one large bulk item per week in addition to your 5-bag limit. If for some reason the large item is unable to be collected, the trash hauler will place an orange tag on the item.

IF YOUR TRASH/RECYCLING/LARGE ITEM IS MISSED, PLEASE CALL COUNCIL MEMBER MELODY STINE AT 717-654-2901 OR EMAIL AT MELODYSTINEFOR HALLAM@GMAIL.COM. YOU MAY ALSO CONTACT THE BOROUGH OFFICE AT 717-755-0810.

**RECYCLING GUIDELINES CAN CHANGE AT ANY TIME!! YOU ARE REQUIRED TO RECYCLE IN HALLAM BOROUGH. PLEASE BE SURE RECYCLABLES ARE RINSED OUT PRIOR TO PLACING IN A RECYCLE BIN TO REDUCE CONTAMINATION. WHEN IN DOUBT, THROW IT OUT!**

### ACCEPTABLE ITEMS INCLUDE:

- PLASTIC—#1, #2 AND #5 ONLY
- PAPER AND CARDBOARD:
  - CORRUGATED CARDBOARD BOXES
  - NEWSPAPER
  - CARTONS FOR JUICE, MILK, SOY MILK, SOUP/BROTH

### UNACCEPTABLE ITEMS INCLUDE:

- PIZZA BOXES
- PAPERBOARD PRODUCTS (TOILET PAPER ROLLS, PAPER TOWEL ROLLS, CEREAL BOXES, TISSUE BOXES)
- SHREDDED PAPER OR PAPER,
- PLASTIC BAGS
- STYROFOAM
- AEROSOL CANS

## HALLAM BOROUGH COUNCIL

Hallam Borough Council meets for a regular scheduled meeting the second Monday of each month at 7:00 p.m. in the Hallam Borough Municipal Office, located at 250 West Beaver Street, Hallam Borough.

Below is the Hallam Borough Council meeting schedule for the remainder of 2020. This schedule is posted at the Borough office as well as on the calendar on the Borough website. \*Meetings are subject to change\*

Mayor: Glenn Wascovich

- ◆ June 8, 2020 Council Members: President: William Fitzpatrick
- ◆ July 13, 2020 Vice-President: Harry Smith, Jr.
- ◆ August 10, 2020 President Pro-Tem: Cindy Knox
- ◆ September 14, 2020 Melody Stine
- ◆ October 12, 2020 Matthew Flinchbaugh
- ◆ November 9, 2020 Kim Krotzer
- ◆ December 14, 2020 Crystal Weston

AMERICANS WITH DISABILITIES ACT-THE BOROUGH WILL PROVIDE REASONABLE ACCOMMODATION FOR ALL PERSONS WITH DISABILITIES PROVIDED THEY CONTACT THE BOROUGH AT LEAST 5 DAYS PRIOR TO THE NEED.

### Tax Collection Reminders

Sharon Dupler, Tax Collector

Ph: 717-755-0810

250 West Beaver Street, Hallam, PA 17406

Fax: 717-751-0371

Email: [taxcollector@hallamborough.com](mailto:taxcollector@hallamborough.com)

COVID-19 has had a financial impact on everyone in some form or other. The York County Commissioners passed a resolution which waives the penalty on the County portion only of the 2020 Spring Real Estate Tax bill if paid in full by December 31, 2020. The Commissioners have asked each municipality to consider the same waiver. At the May 11, 2020 virtual Council meeting, Hallam Borough Council did pass a resolution also implementing the same waiver. What this means is that the Face amount, which is due between now and June 15, 2020, will now be the amount due from now until December 31, 2020. There will be no penalty applied unless taxes are not paid in full by December 31, 2020. This only affects the real estate tax bill. There is no change in Per Capita tax payments.

Hallam Borough Council passed an ordinance requiring owners of all rental properties to notify the Tax Collector with the first, middle initial and last names of the every occupant aged 18 to 65 for Per Capita reporting purposes. The ordinance states you must notify the Tax Collector within fourteen (14) days, from the date of renting any property to a new tenant, or within fourteen (14) days from the removal of any tenant from said property. Failure to comply will be considered violation of this ordinance and shall be subject to a fine and costs of prosecution.

### West Nile Virus Control Program

According to the York County Program Administrator, Lee Graybill, mosquito surveillance and control measures for the year 2020 will begin in late April and continue thru September. This year, tick surveillance will also be conducted at state and county parks from April thru October. This will consist of collecting and testing ticks for known pathogens.

As always, individual residents can help control mosquito populations and virus activity by eliminating areas of standing water, regular swimming pool maintenance, gutter maintenance, regular rinsing of bird baths, aeration of garden ponds or by eliminating or turning over containers or other items that hold water.

Residents with complaints or concerns, should visit the PA Department of Environmental Protection West Nile Virus Control Program website ([www.dep.state.pa.us/WNV/index.html](http://www.dep.state.pa.us/WNV/index.html)). Concerns can be directly submitted to DEP from this website.

### **IMPORTANT PHONE NUMBERS FOR RESIDENTS:**

Reserve Emig Park pavilion—Hallam Borough Municipal Office—717-755-0810

Non-Emergency 911—717-840-2971

Eastern York County Sewer Authority—Chastity Polonikas, Executive Secretary 717-252-2797

York Water Co.—717-845-3601

Columbia Gas— Customer Service and Emergencies—888-460-4332

Met-Ed—Customer Service—800-545-7741

Area Agency on Aging— 717-771-9610

Rent Hallam Fire Hall—Joyce Dusman—717-577-4150 or joycedusman@aol.com

### **Susquehanna Valley EMS—Join NOW and receive the benefits of subscription coverage**

Susquehanna Valley EMS mailed its first round of subscription packets in late winter. If you missed seeing yours in your mailbox, don't worry—you will be receiving a reminder subscription packet in the mail soon!

You will want to keep a lookout for this packet so you can join and enjoy the benefits of subscription coverage because when illness or injury occurs, and an ambulance and prehospital medical care are needed, your main concern should be about getting better, not how much is this care going to cost.

Residents who subscribe to Susquehanna Valley EMS know that should they have a medical emergency and need to call for an ambulance they will receive exceptional patient care without having to pay the full cost of the medically necessary emergency service. They take comfort in knowing that they will receive reduced-cost emergency ambulance service including both basic and advanced life support assistance.

Subscribers receive a 50% discount on out-of-pocket expenses including co-payments and deductibles related to medically necessary emergency ambulance service. They are also entitled to discounts on scheduled non-emergency ambulance and wheelchair van transports. Residents without a subscription will pay a much higher fee for the prehospital medical care they receive.

*Subscriptions are especially important for seniors, people living alone, people with life-threatening conditions such as Asthma, Allergies, COPD, Diabetes, Heart Disease, and Neurological Disorders.*

When you subscribe to SVEMS, not only are you protecting yourself, you are helping us to provide excellent, around-the-clock care and efficient transportation for area residents too. Your support keeps us trained in the latest forms of emergency medical care and helps our fleet of 16 ambulances stay in service. This is so important because we answered over 15,000 requests for service last year.

You can join Susquehanna Valley EMS today by going to our website [www.svems.org/](http://www.svems.org/) subscribe-donate. *Subscriptions are tax-deductible to the fullest extent allowed by law.*



### **COMMUNITY ORGANIZATIONS**

There are several community organizations that may be looking for volunteers to join their organizations. Please contact the following individuals if you are interested.

- \* Kreutz Creek Lions Club—Bill Linnemans—717-755-3945
- \* Kreutz Creek Valley Library—717-252-4080 or [www.yorklibraries.org/kreutzcreek](http://www.yorklibraries.org/kreutzcreek)
- \* Kreutz Creek Preservation Society 5345 Lincoln Highway- 10:00 a.m.-2:00 p.m. second Saturday of every month or by appointment—Ealora Holland-717-755-3777 or [kcvps@pa.net](mailto:kcvps@pa.net)
- \* Friendship Fire Co. Ladies Auxillary—Joyce Dusman-717-577-4150
- \* Cub Scouts—St. James Church 180 West Market Street, Hallam—717-757-6818
- \* The Horn Farm Center, located at 4945 Horn Road in Hellam Township-[www.hornfarmcenter.org](http://www.hornfarmcenter.org)

### **EASTERN YORK RECREATION AUTHORITY**

Parks and Recreation Director—Jessica Cirilo, CPRP      [Www.easternyorkrec.com](http://www.easternyorkrec.com)

There is a new online registration site available to sign-up for upcoming classes and sports programs! Participants can register and pay online with a credit/debit card. Feel free to check out the latest programs and classes available.

## TIME TO WALK THE DOG....DO YOU HAVE EVERYTHING?

Having a safe public sidewalk system in the Borough gives children and adults the opportunity to experience low impact exercise outdoors on a daily basis. At any given time, parents with strollers, elderly walkers, or dog walkers take advantage of nice weather by using our sidewalks. Although the majority of the dog walkers are diligent about picking up after their dogs on these strolls, some are not. It is a violation of the Hallam Borough Code (Chapter 2, Part 2) to fail to clean up dog feces immediately, so taking the dog out means being prepared to do that. In the event a dog owner needs to clean up and doesn't have a "doggie bag", the Borough has placed dog walk stations with bags and disposal receptacles on posts at Emig Park, at the West Beaver Street ball diamond (opposite Lee Street), and at the softball fields at Emig Street, West Beaver Street, and Claire Avenue. Any dog walker can take advantage of these stations to dispose of the dog waste during a walk. Cleaning up dog waste allows everyone to take full advantage of our sidewalk system, prevents storm drain pollution, and ensures a healthy outdoor environment.

## GUIDELINES FOR OPEN BURNING IN HALLAM BOROUGH

Trash-burning and leaf burning were banned in the Borough several years ago with the introduction of free trash collection and recycling, so the Borough has been air-pollution free for many years. However, with the increased popularity of portable and permanently-constructed recreational backyard fire pits, Council needed to take a new look at the Borough's guidelines for open burning. In 2019 a revised air pollution ordinance was adopted, targeting backyard firepits. If you are thinking of purchasing or constructing a firepit, here's what you need to know:

1. Construction of Fire Pit Receptacle: Must be a non-combustible, ventilated container covered with a screen (one-half (1/2) inch or small mesh) and a total fire area of three (3) feet or less in diameter and two (2) feet or less in height, including, but not limited to chimineas, manufactured fire pits with screen covers, homemade fire pits with screen covers. Note: A zoning permit is not required to construct a backyard fire pit; however, if it is brought to the attention of the Borough that a firepit has been constructed without the required 15' setback, it will have to be relocated to a safer distance.

2. Burning Materials: Must be only seasoned firewood, Duraflame/Pres-to-Logs, or charcoal briquets. No domestic trash, yard waste, garbage, or leaves may be burned.

3. Setbacks: The fire pit must be setback a minimum of fifteen (15) feet from any dwelling, building, structure, or any overhanging branches or other overhead obstructions.

4. Safety Measures: Do not leave the fire unattended. Have a garden hose or a fire extinguisher on hand at all times. Do not burn during a dry period or if there is a public ban on open burning. Do not leave the fire pit smoldering; instead, put the fire out completely after use.

5. Complaints: If you feel a neighbor is disregarding the guidelines for open burning, you have the option to educate your neighbor on the rules. If that fails, you can call 911 to report the violation to the Hellam Township Police Department for follow-up.

## REMOVE WEEDS FROM STREET GUTTERS AND NO GRASS IN THE STREETS OR SIDEWALKS

Please be aware that you may see the following fluorescent-colored card on your door if your property is out of compliance with outside maintenance:

COURTESY REMINDER  
FROM HALLAM BOROUGH  
DATE: \_\_\_\_\_  
ADDRESS: \_\_\_\_\_

Please keep Hallam Borough free from the appearance of neglect! From time to time, we remind residents to take extra steps with outside maintenance during the growing season. Chapter 10 (Health and Safety) and Chapter 21 (Streets and Sidewalks) of the Hallam Borough Code of Ordinances require all of the **conditions below to be eliminated** in order to comply with the Borough's vision of a clean, well-maintained community.

1. Weeds growing in the gutter line of the street.
2. Weeds growing in the pedestrian sidewalk.
3. Weeds growing in the grass strip between the sidewalk and curb.
4. Weeds over 10" high growing in the lawn or in flowerbeds.
5. Wild-growing trees (sumac, etc.) and wild shrubbery.
6. Grass clipping discharged onto the sidewalk.
7. Grass clippings discharged onto the street.

Please bring your property into compliance with Chapter 10 within seven (7) days. If you have questions, call the Borough Office at 717 755-0810, Extension 4. **Be advised, that this reminder is part of a Borough-wide assessment of properties, not the result of a specific complaint about your property.**

## CLAYTON ELY EMIG PARK

Spring is approaching! There are three (3) pavilions, each named, within Emig Park. The Maple pavilion is the newest and is situated on the hill by the basketball courts. The Oak pavilion is located adjacent to the lower parking lot and closest to the creek. The Elm pavilion is the smallest and sits between the Maple and Oak pavilions. The Maple and Oak pavilions are available, for a fee, to reserve for a special event. The Borough does not take reservations for Elm. That is available on a first-come, first-served basis. If you are interested in reserving one of the pavilions, an application form is available on the Borough website ([www.hallamborough.com](http://www.hallamborough.com)), or you may stop by the Borough office and pick one up. The fee must be paid at the time the application is submitted. There is a calendar on the Borough website to check availability, but call the Borough office before submitting any paperwork/fees. Please contact the Borough Secretary at 717-755-0810 or [secretary@hallamborough.com](mailto:secretary@hallamborough.com) with questions, to check availability or to reserve your spot!

Borough resident fee: \$50.00

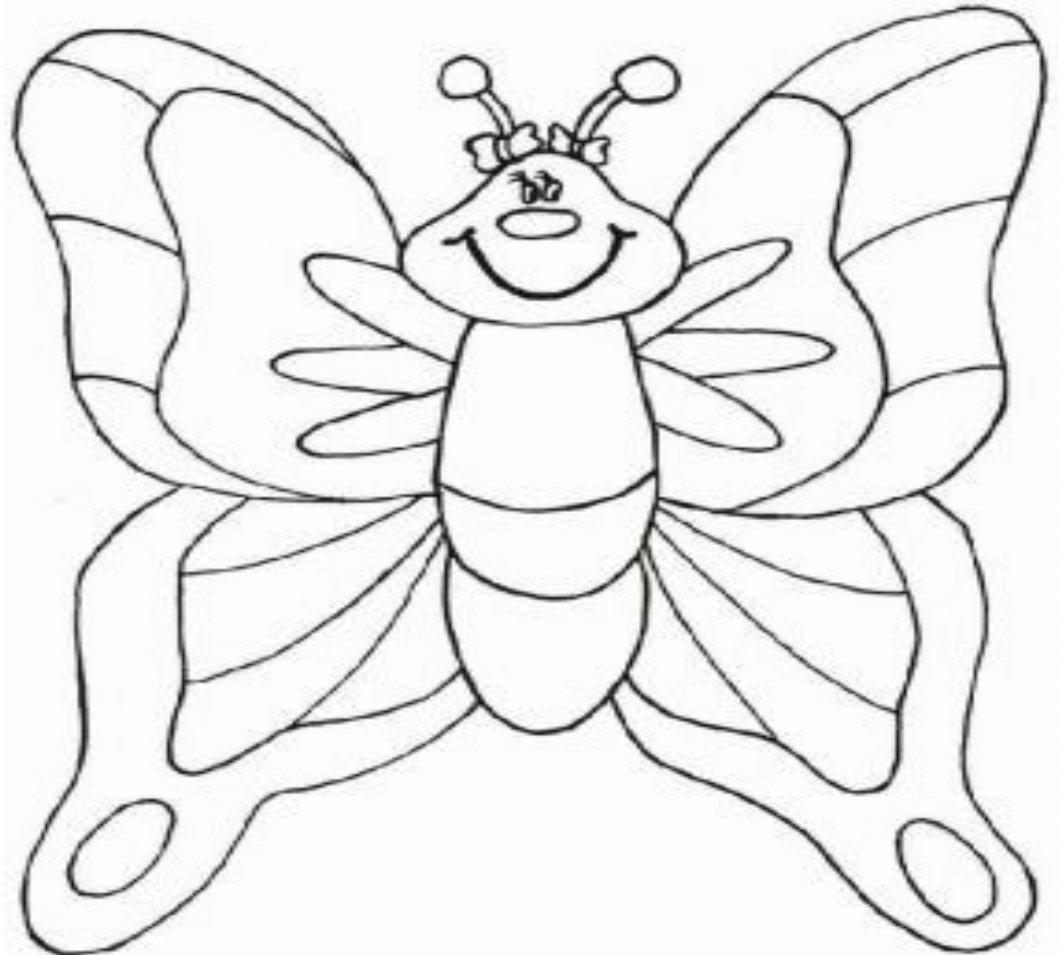
Non-Borough resident fee: \$90.00

REMINDER: Hallam Borough Code of Ordinances Chapter 10, Part 5—Nuisances

Section 501 of the Nuisance ordinance states that you may not operate gasoline-powered lawn equipment any weekday before 8:00 a.m. or on any Sunday before 12:00 p.m.

With the ongoing effects the COVID-19 virus has on community events, the Hallam Borough Community Yard Sale scheduled for Saturday, June 6th has been cancelled.

Color me!



**HALLAM BOROUGH  
250 WEST BEAVER STREET  
HALLAM, PA 17406  
717-755-0810  
www.hallamborough.com**

**Presorted  
Standard  
US Postage  
Paid  
York, PA  
Permit # 1908**



**KREUTZ CREEK VALLEY PRESERVATION SOCIETY MEMBERSHIP**

The Kreutz Creek Valley Preservation Society (KCVPS), a non-profit tax exempt corporation, was organized in 1986 to study and promote an interest in the history of the area which is defined as Hallam Borough and Hellam Township; to identify restore, and preserve historic sites, open space, natural conservation areas and the general character of the area and to promote community spirit by enriching the social, educational and cultural life of the community.

In 1997, KCVPS purchased the one room Rudy school house to be used as our museum for Hellam/Hallam memorabilia. KCVPS has compiled information on original road docket, deeds, area photographs, early real estate transactions and family genealogy. We have and are continuing to conduct interviews with our longtime residents to establish an oral history archive. We have also assimilated a collection of early 20th century postcards depicting local scenes. We are constantly gathering further information and memorabilia regarding our area.

The KCVPS museum, located on the historic Lincoln Highway at 5345 is filled with Hellam/Hallam memorabilia, as well as a wealth of information pertaining to this area. DID YOU KNOW THE FIRST SETTLERS IN THE HELLAM VALLEY ARRIVED IN 1719? The museum is open the second Saturday of each month from 10:00 a.m. to 2:00 p.m. or by appointment. Contact Ealora Holland at (717)755-3777 or email: [kcvps@pa.net](mailto:kcvps@pa.net)

COME VISIT US! Given the richness and variety of the Kreutz Creek Valley's cultural landscape, we hope you will join us in supporting our efforts so that the past can be preserved in harmony with the present and the future.

**KREUTZ CREEK VALLEY PRESERVATION SOCIETY**

**DUES: \$10.00**

NAME: \_\_\_\_\_

ADDRESS: \_\_\_\_\_

CITY: \_\_\_\_\_ STATE: \_\_\_\_\_ ZIP: \_\_\_\_\_ PHONE: \_\_\_\_\_

EMAIL: \_\_\_\_\_